



Spotlight on

LEARNING

...why we do what we do

Learning Through Play



Te Ao Marama
SCHOOL



What is

PLAY?

Play is a child's natural way of exploring the world we live in. Developmentally, play covers all aspects of learning – physical, social, emotional and cognitive. Play provides learning opportunities that are multi-sensory, interactive, creative and imaginative. Through play, children are not only learning about the activity or working towards an outcome, they are engaging with each other, negotiating, sorting out arguments and establishing friendships.

They imagine, explore and invent. It is through taking risks, discovering new ideas and putting these ideas into action that learning takes place.



Why it's

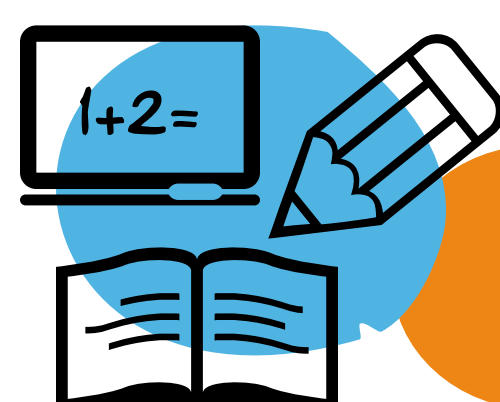
IMPORTANT

The New Zealand Curriculum identifies and values the *Key Competencies*. All of these can be developed through play-based learning. With recent developments in neurological research, play has been confirmed as the most behaviourally, biologically and developmentally appropriate education to promote healthy childhood development.

"Play is often talked about as if it were a relief from serious learning. But for children, play is serious learning."

—Mr. Rogers

More recently, neuroscience has also identified the important link between learning through play, physical movement and the successful development of key executive functioning skills now viewed as paramount for the adult workforce.



What about

READING, WRITING & MATHS?

While play is an important part of learning, so too are skills in literacy and numeracy. Children will still receive explicit teaching in reading, writing and mathematics, based on their needs or the needs of the group.



Links to our

VALUES

Learning through play sparks **curiosity** and **creativity**, allowing kids to notice, question and wonder. They can explore passions and ignite inquiry. They can collect, create and explore through trial and error. Play builds **collaboration** through problem solving, making connections and building relationships.

Confidence and resiliency result through peer interaction and negotiation.



Links to the

RESEARCH

School News; 'Why Teachers Should Provide Play Every Day'
<https://bit.ly/2BckFYR>

Longworth Education; 'Play: The Four-Letter Word in Primary Schools'
<https://bit.ly/2MQkkRO>

Harvard University; 'Executive Function & Self Regulation'
<https://bit.ly/2Aale4k>

Ministry of Education; 'Key Competencies at Primary School'
<https://bit.ly/2QJZXyR>

John Spencer; YouTube 'How Play Leads to Creativity'
<https://bit.ly/2MTppcR>

Technology Rich Inquiry Based Research; 'Science in Early Learning'
<https://bit.ly/2yaxLWE>

Play-based learning: producing critical, creative and innovative thinkers. 'Education Central'
<https://bit.ly/2FOj10t>



It's all about

RELATIONSHIPS

Learning through play is centred around building relationships and creating connections. Play can be individual or involve many; allowing communication skills to inherently happen alongside play. This in turn builds enduring relationships with children and adults alike.

PLAY
is the highest form of
research
Albert Einstein



Visit us at www.teaomarama.school.nz